

*In the world of Technology,
it's people who make a difference*



 **LIREX**

lirex.com

Managed Data Protection Services DPaaS / BaaS

Boyan Yanchev, CTO @ Lirex BS

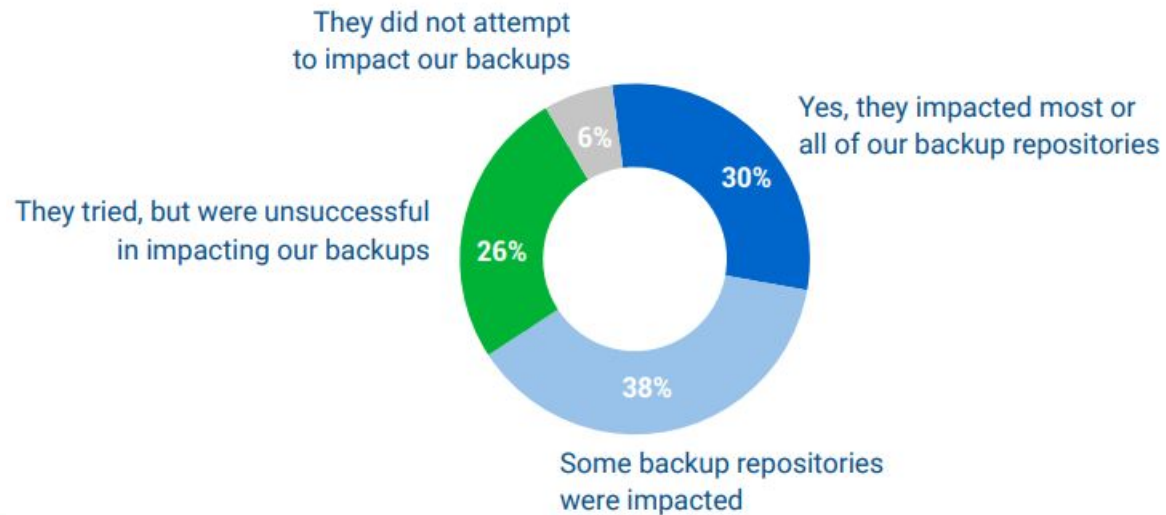
CISA, VCTSP

ISO 27001, 22301, 37001, 20000 Auditor



Challenges

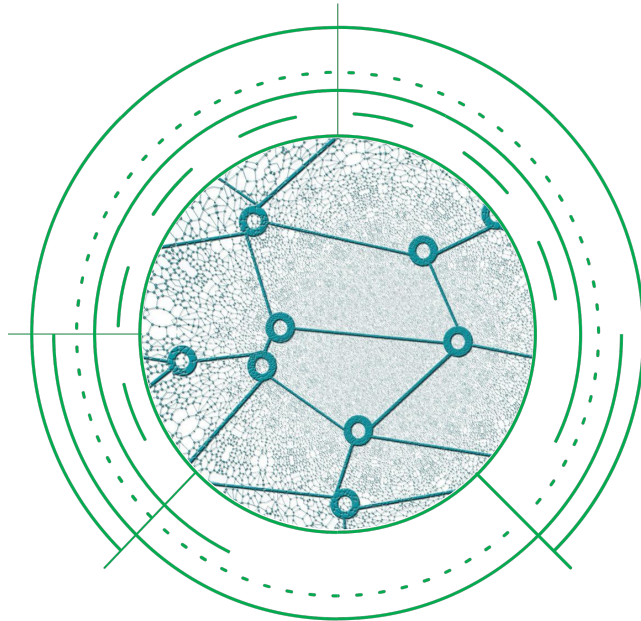
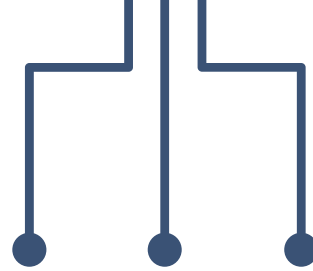
- **Regulations** - PCI DSS, GDPR, NIS Directive, NIST, ITAR/EAR, HIPAA, ISO 27001
- **Storage & Space** – Capacity, Data growth, Sourcing
- **Location limitations** – On-Prem/Off-site, Cloud, EU-/US- based
- **Incidents** – Hardware and Software outbreaks, Human Errors
- **Malicious Attacks** – backup as first target



Did the threat actor attempt to modify/delete backup repositories as part of their ransomware attack? (n=1,000)

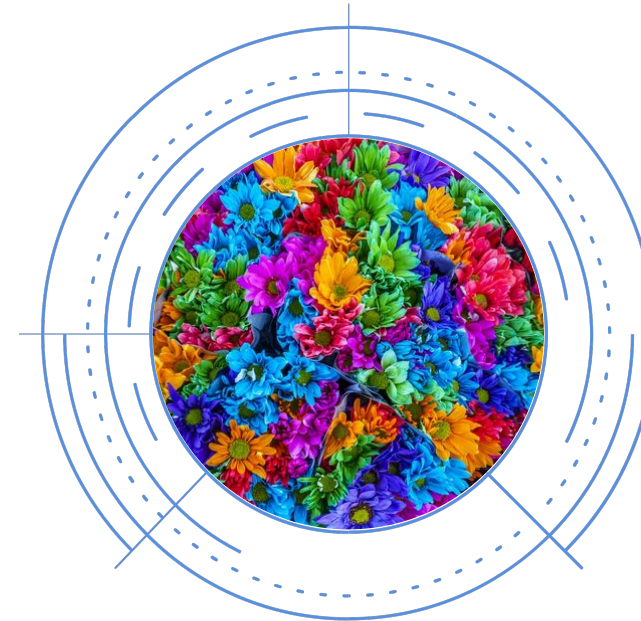
source: Ransomware Trends Report, 2022, Veeam

The approach



ANY-TO-ANY

entirely new range of protection options for all types of business spread around the globe(any source location) to multiple resources(any target location) combining best in class protection with security and regulatory compliance and still keeping the budget under control



MANY-TO-MANY

modern digital experience scenario where multiple data sources are managed across the lifecycle having multiple protection resources - fast on-site protection, mid-term retention, geographically spread locations and finally deep archiving options for long term storage



BaaS/DPaaS Innovation DNA



- **Distributed Data Locations** - AWS & Azure, Partner Data Centers certified – SOC 2 Type II, NIST, PCI DSS, FedRamp, ITAR/EAR, HIPAA, ISO 27001, ISO 22301, Lirex's own Data Centers and customers' premises
- **Tools** – SD Storage & Networks, Automation, End-Point & Workload Protection and Data Protection & Backup - Gartner Leaders and Visionaries
- **Processes**
 - Well-architected principle providing Reliability, Security, Cost Optimization, Operational Excellence, Performance Efficiency
 - Strategy, Design, Transition and Operation
- **People** – Teams, Innovation, Well-engineered Charter, RPA



Managed Services Portfolio

- Pay-as-You-Go model
- Core Managed Services
 - Infrastructure, Servers, Storages, Network, DataBases
 - Service Desk, End-User/Point Management
- DataProtection as a Service / Backup as a Service
- Desktop as a Service – VDI, vApp, Secure Third Party Access
- EndPoint & Workload Protection
- Authentication /SSO, MFA, IdM/ as a Service
- Vulnerability Management Services
- SecOps

- Everything as a Service





☎ +359 2 9 691 691

✉ office@lirex.com

lirex.com